

Autism Model School

2023 to 2024 Annual Report



Stories that Shine

It takes a group of stars—each shining as an individual point of light—to form a pattern in the night sky. It's the same story here at AMS. Each student shines in their own way. Each one has a story to tell. A time when they overcame obstacles on the path to learning something new.

And while the goals for every student are unique to their own journey, the overwhelming pattern is one of ongoing growth and development. Here are some of our Stars' amazing stories...



Students take part in an AMS tradition...dodgeball!

Rocketing to Reading Growth

Our first story is about a creative student who loves to draw. This individual began one school year four grade-levels behind in reading achievement. An 8th grader reading at a 4th grade level according to their NWEA Map Growth Assessment scores. Then **Direct Instruction**, delivered by caring teachers, came to the rescue.

The student took DI courses like Read to Achieve, Corrective Reading, and Reading Comprehension. When this individual was retested the following fall, the results were astonishing. The student's reading scores measured at a 10th grade level. They showed more annual growth than 99% of same-aged peers. What a star!

Making Magical Progress

Our second story is about a high school-aged student. This individual, who has a severe language deficit, recently took part in a study of **IDAPT**, the school's custom built job and life skills training software. First, the student was asked to make an unfamiliar recipe and given no further instructions. They took no action—completing 0 of 26 steps over four attempts. Next, the student was handed a tablet with the IDAPT application opened to the recipe.

Here's where the magic happened. They completed over 90% of the steps in the recipe with no help from their teacher on the first try! The student improved their score to 100% over the final three sessions.

Conquering Communication Challenges

Our third story focuses on a middle schooler who faced many obstacles to learning. A non-reader with communication difficulties, this student often became frustrated and showed disruptive classroom behaviors.

After one year of Direct Instruction courses focused on language, this individual moved from having a mild delay to average language. This accomplishment opened new paths towards growth in other academic and social areas. (Inter)Stellar work!



Students creating something new from recycled materials.

Accelerating to Workplace Wins

In our final story we catch up with a former student now turned **alumni**. This individual took advantage of the school's personalized approach to instruction and made steady progress during their time at AMS. After graduating, they took a warehouse job for a major retailer.

We recently contacted them to see how things were going. They just received a promotion at work. In their new role, they'll be training new hires at the fulfillment center. What a glowing success!

Academic Progress & Performance

While the school's focus is on personalized instruction tailored to each student's goals, broader measures of academic progress and performance are also used to evaluate our program.

Map Growth Assessment

A subset of students are given this assessment each fall. Year-over-year scores are compared to measure growth. For reading, 74% of students improved their scores; 77% scored higher in math.

State Report Card

The school does not feel the **State Report Card** is an appropriate way to measure the growth and achievement of our target student population—100% of whom qualify for special education services and are diagnosed with autism or another developmental disability.



In Their Own Words

At the end of every school year we ask families to tell us how we're doing. Survey results for the 2023-2024 program year were excellent—with 97% of parents saying they'd recommend the school to others.

We also asked parents what words or phrases they'd use to describe the Autism Model School. Here are some direct quotes...

"Life changing and a true blessing."

"Amazing, beyond helpful, best thing that has ever happened to my child."

"Diverse and adaptable...a loving, caring environment."

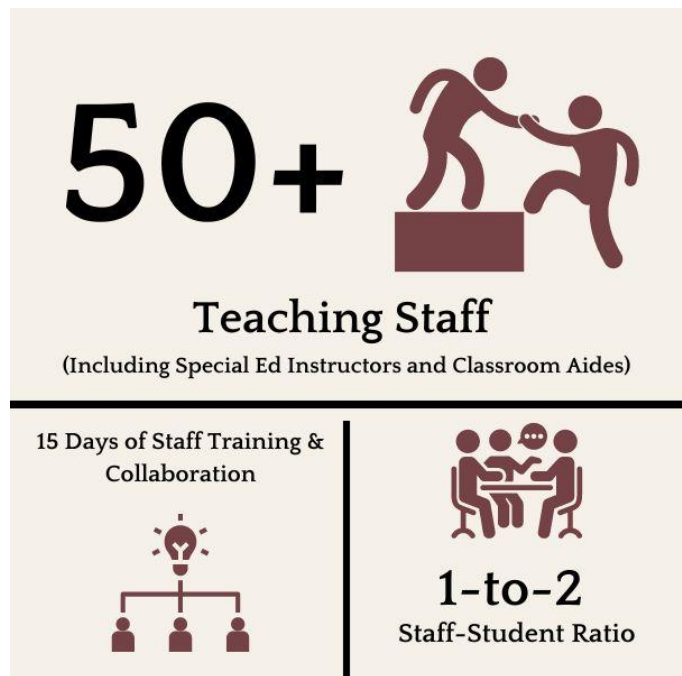
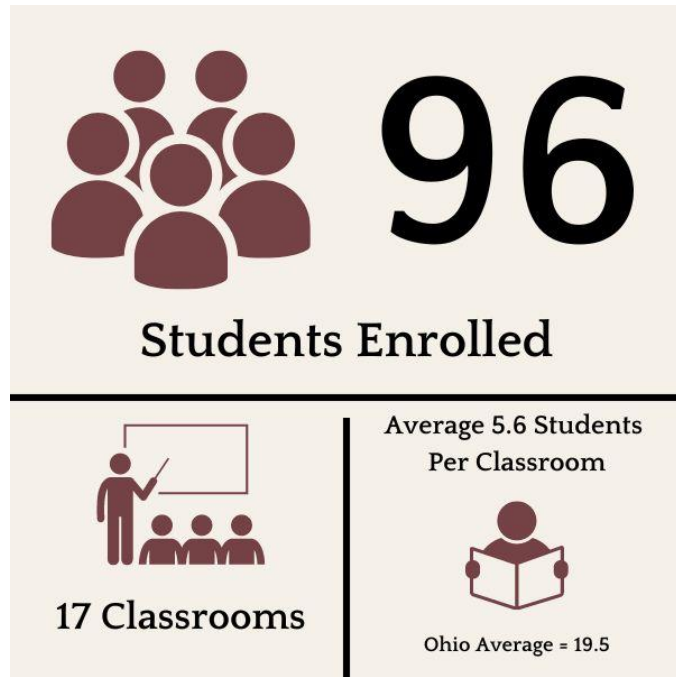
"My child loves going to school and looks forward to getting on the van each morning."



A student gets ready to make a recipe using a task analysis support.

Numbers & Figures

Check out these infographics from the year that was...



Statement from Our Sponsor








The **Educational Service Center of Lake Erie West** (ESCLEW) served as a sponsor for the Autism Model School during the 2023-2024 school year. ESCLEW monitored the school's academic and fiscal performance, as well as organization and operation of the school, and determined that the school was overall compliant with all laws and rules.



A student learns about the armed forces on Veterans Day.

Financials

Massa Financial Solutions served as the school's treasurer and fiscal sponsor. AMS received an Auditor of State Award for maintaining transparent financial records.

Autism Model Community School End-of-Year Budget (June 30th, 2024)	
Income	Expenses
 State Revenues \$4,241,016	 Personnel \$ 3,405,215
 Federal Support \$283,430	 Programs \$ 502,883
 Grants & Donations \$ 78,065	 Facilities \$ 236,480
 Administrative \$ 89,273	
<hr/> \$ 4,602,511	<hr/> \$ 4,233,851



Learn more by visiting 

amstoledo.org